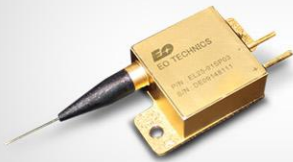


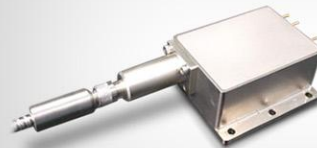
Laser Diode Module

- 30W output power
- 105/125 μm multimode fiber



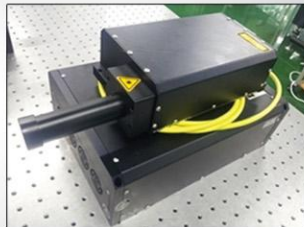
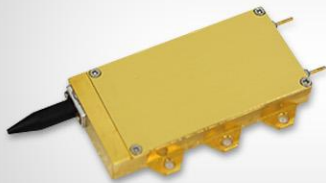
30W

- 75W output power
- 400 ~ 600 μm multimode fiber



75W

- 150W output power
- 105/125 μm multimode fiber



150W

- 200W output power
- Stacked laser array



200W

Laser Line-up

▶ IR ▶ Green ▶ UV

ns laser	ps laser	fs laser
----------	----------	----------

Fiber

- ▶ 10W / 20W
- ▶ 150W / 300W / 500W / 1kW / 2kW / 4kW
- ▶ 10W



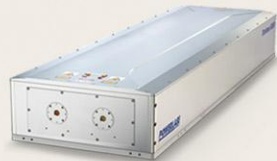
Nd:YVO₄



- ▶ 10W / 20W / 40W / 50W / 100W
- ▶ 4W / 5W / 25W / 48W
- ▶ 2W / 5W / 20W

Nd:YAG

- ▶ 200W ~ 3.2kW
- ▶ 100W / 200W / 400W
- ▶ 40W / 80W / 160W



- ▶ 5W / 16W / 40W / 200W
- ▶ 3W / 8W / 20W / 100W
- ▶ 5W / 15W / 30W



- ▶ 5W / 20W / 30W / 120W (Q3 2016)
- ▶ 3W / 10W / 15W / 70W (Q4 2016)
- ▶ 5W / 8W / 30W

